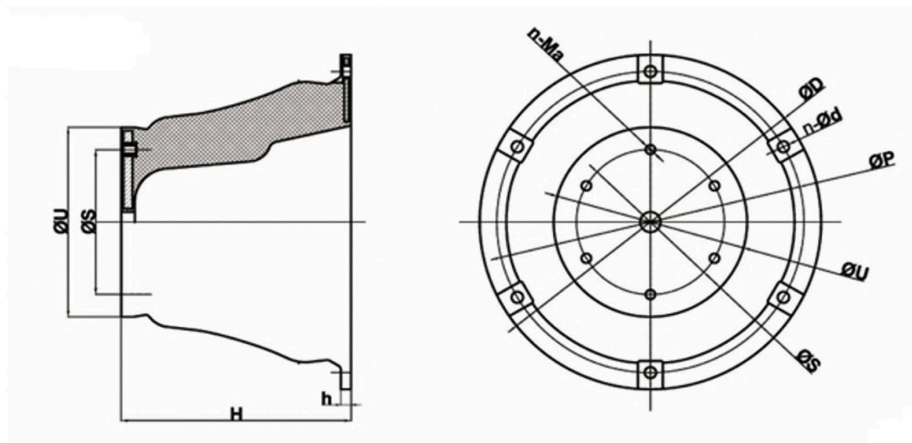
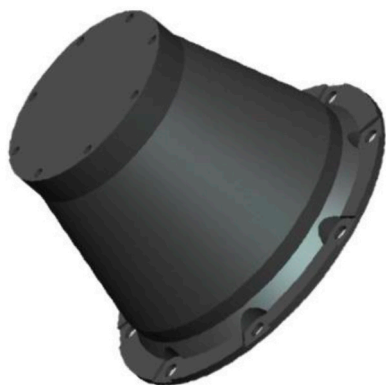


FENDER A CONO

MISURE DISPONIBILI



MODELLO	H	h	ØU	ØS	ØP	ØD	n-Ød	n-Ma
CONO 500H	500	25	425	325	675	750	4 - Ø30	M24
CONO 600H	600	27	510	390	810	900	6 - Ø30	M24
CONO 700H	700	32	595	455	945	1050	6 - Ø38	M30
CONO 800H	800	36	680	520	1080	1200	6 - Ø44	M36
CONO 900H	900	41	765	585	1215	1350	6 - Ø44	M36
CONO 1000H	1000	45	850	650	1350	1500	6 - Ø56	M42
CONO 1100H	1100	50	935	715	1485	1650	6 - Ø50	M42
CONO 1150H	1150	52	998	750	1550	1725	6 - Ø56	M42
CONO 1200H	1200	54	1020	780	1620	1800	8 - Ø50	M42
CONO 1300H	1300	59	1105	845	1755	1950	8 - Ø60	M48
CONO 1400H	2000	66	1190	930	1890	2100	8 - Ø60	M48
CONO 1600H	2250	72	1360	1060	2160	2400	8 - Ø70	M48
CONO 1800H	2500	78	1530	1190	2430	2700	10 - Ø76	M56